



February 2023

## Who we are...

**The Innovative Health Alliance of New York (IHANY)** and **Central New York Accountable Integrated Medicine (CNYAIM)** are collaborations among doctors, health systems, and health care providers in the Albany and Syracuse regions. These clinically integrated networks (CINs) aim to improve the health of communities we serve by working together in new, more coordinated ways. In today's evolving health care landscape, clinical integration is essential to achieving better health for the community, better care for individuals, and lower costs of health care.

## Two Population Health Leaders Speak at National Conference

**Kristen Mucitelli**, senior vice president, Population Health, Advocacy, St. Joseph's Health and St. Peter's Health Partners, and **Brian Pinga**, administrator CIN/ACO, were speakers at the National Association of ACOs (NAACOS) 2023 Winter Boot Camp conference in Orlando, Florida, in February.

The boot camp provides an opportunity to investigate and share best practices and tools to meet the challenges of population management, staffing models, and quality improvement.

Kristen discussed how ACOs use data to provide return on investment on new care models and resources to support value-based care efforts. Brian spoke about key strategies to improve quality performance, focusing on improving engagement, leveraging technology, and implementing automation.



# New Regional Newsletter

The first issue of our new regional newsletter was well received among our colleagues. We encourage you to read the newsletter each month. We set it up so it is easy to scroll to find information important to you and your patients.

Unless otherwise noted in an article, questions about IHANY content should be directed to [Brian Pinga](#), administrator CIN/ACO. Questions about CNYAIM content should be directed to [Jason Decker](#), administrator CIN/ACO.

## This Month's Priorities

### New CMS Shared Savings Program Posters and Documents

To comply with the Centers for Medicare & Medicaid Services (CMS) Medicare Shared Savings Program (MSSP) Beneficiary Notification rule, new 2023 posters must be hung in workplaces **effective today**, and new letters need to be available to provide to patients at their request. These materials should have been made available to all practice management/operations in February.

If you have any questions, please contact:

CNYAIM: [Jason Decker](#), administrator CIN/ACO, 315-679-6377

IHANY: [Brian Pinga](#), administrator CIN/ACO, 716-213-7225

---

## Top Five Annual Wellness Visit (AWV) Performers

Congratulations to our top performers below who are driving great results in our quality metrics.

## IHANY

AWV Top Five Performers > 36 Beneficiaries		
(Claims 1/1/22 - 10/1/22)		
Organization	Provider's Name	% with AWV
St. Peter's Health Partners Medical Associates	Mary Ellen Drislane, M.D.	86.09%
St. Peter's Health Partners Medical Associates	Catherine Nguyen, M.D.	83.80%
St. Peter's Health Partners Medical Associates	Christopher Messitt, M.D.	83.08%
St. Peter's Health Partners Medical Associates	Iram Mall, M.D.	82.93%
St. Peter's Health Partners Medical Associates	William Kowal, M.D.	82.35%
AWV Top Five Performers ≤ 36 Beneficiaries		
(Claims 1/1/22 - 10/1/22)		
Organization	Provider's Name	% with AWV
Capital Region Family Health Care	Alexandria Sanchez, NP	85.71%
Samaritan Hospital	Kristin Cooke, NP	84.21%
Ellis Hospital	Basmatie Sallick, NP	82.61%
Ellis Hospital	Michael Obrien, PA	80.77%
Carondelet Regional Medical	Jeri Savoie, NP	75.76%

## CNYAIM

AWV Top Five Performers > 57 Beneficiaries		
(Claims 1/1/22 - 12/1/22)		
Organization	Provider's Name	% with AWV
Slocum-Dickson Medical Group	Thomas John, M.D.	85.76%
Lewis County General Hospital	Monica Kwicklis, M.D.	85.71%
Slocum-Dickson Medical Group	Michelle Chambrone, RN, ANP-C	85.06%
Slocum-Dickson Medical Group	Celesta Hunsiker, M.D.	82.22%
St. Joseph's Hospital Health Center	Beth Wiedeman, M.D.	82.05%
AWV Top Five Performers ≤ 57 Beneficiaries		
(Claims 1/1/22 - 12/1/22)		
Organization	Provider's Name	% with AWV
Rome Medical Group	Jennifer Walther, FNP-C	89.66%
Rome Medical Group	Diane Clute, FNP	86.21%
Slocum Dickson Medical Group	Marian Thompson, DNP, FNP-BC	84.85%
Rome Medical Group	Randie Schrader, NP	81.25%
Lewis County General Hospital	Kathy Der, FNP-C	79.49%

# AWV Tip of the Month

In a new calendar year, it is important to see and schedule Medicare patients for their Annual Wellness Visit (AWV) visit as soon as possible, especially if patients didn't have an AWV in 2022. The *Health Maintenance and Gaps in Care* tab in Epic Togethercare will help you identify patient eligibility. There is abundant evidence of the highest benefits in health outcomes, preventive services, clinical condition documentation, quality performance, and reporting among patients that have an AWV compared to patients that don't have an AWV and don't see their primary care provider at least once a year.

**For primary care providers**, Trinity Health has developed a tip sheet for providing **Telehealth Annual Wellness Visits**. Members of the IHANY/CNYAIM Quality Team (**Adriana Quiroga-Garcia** and **Laura Graham**) are available to walk through this guide with you and support you in any way possible to help integrate the AWV into your practice. IHANY/CNYAIM also has educational materials for your exam rooms and patients.

**For specialty care providers**, if you have a Medicare beneficiary patient who does not have a PCP, please direct them to any of these practices within the IHANY/CNYAIM networks to set up a primary care appointment and ask specifically for an Annual Wellness Visit:

## IHANY Primary Care Providers:

### Ellis Medicine

**Emily T. Etzkorn, M.D. at Amsterdam Internal Medicine & Pediatrics (518) 842-0017**

**St. Mary's Healthcare Amsterdam**

**St. Peter's Health Partners Medical Associates**

**Wynantskill Family Medicine (518) 283-1974**

## CNYAIM Primary Care Providers:

**Christian Health Service of Syracuse**

**Fairground Family Physicians (315) 682-6165**

**Lewis County General Hospital (315) 376-5086**

**Oneida Health Systems**

**Oneida Medical Associates**

**Popuri P R MD**

**Rome Medical Group**

**Slocum-Dickson Medical Group**

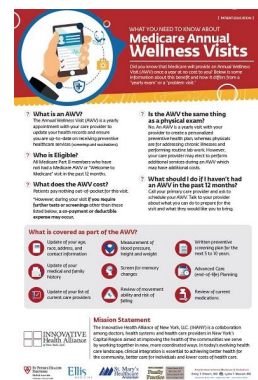
**St. Joseph's Physicians**

## Other AWV Educational Materials

The IHANY/CNYAIM team is providing a **Trinity Health Medicare AWV Quickstart Toolkit** for provider education you can utilize for outreach and education. If you would like copies, please reach out to **Adriana Quiroga-Garcia**.

IHANY participating providers may use this **Medicare AWV Patient Education poster** for patient outreach and education. There is also a brochure version to hand out. If you would like these materials for your practice, please reach out to **Brian Pinga**.

**CNYAIM is working to create a similar document which will be included here in future newsletters.**



# Monthly AWW Reminder Item

Friendly Reminder: The Medicare Shared Savings Web Interface/GPRO reporting period began on Jan. 3, 2023 and will end on March 31, 2023. Quality leads with questions regarding this process should contact [Adriana Quiroga-Garcia](#) or [Laura Graham](#).

---

## HCC Coding Catch-Up: Peripheral Vascular Disease

Documentation, coding, and submission of each patient's diagnoses or Hierarchical Condition Category (HCCs) **is required at least once per calendar year, restarting every Jan. 1.**

### Peripheral Vascular Disease – Risk Adjustment Coding Guide

Early diagnosis of peripheral vascular disease (PVD) can be determined based on clinical findings. Signs and symptoms related to PVD that should be documented if any are present include:

- alopecia on legs
- claudication
- diminished pulses in legs
- ulceration and sores with poor healing on legs

For documentation and coding purposes, PVD is synonymous with:

- peripheral artery disease (PAD)
- spasm of artery
- intermittent claudication

Atherosclerosis of the extremities **should be documented and coded** with the following when present:

- location and laterality of disease (e.g., bilateral lower extremities)
- intermittent claudication
- rest pain
- ulcers (specify location)

Per coding guidelines, there is a causal relationship between diabetes and PVD disease unless they are documented as unrelated.

**If diabetes contributes in any way to PVD, they should be linked.**

**The most effective way to document is MEAT.** This acronym represents **M**onitor, **E**valuate, **A**ssess, or **T**reat the condition.

**For more information on these topics, visit our website <https://www.ihany.org/for-providers/hcc-provider-education/>.**

---



# Continued Concerns for Crowded Emergency Departments

Emergency departments in our regions continue to experience unprecedented pressures and demand for services, coupled with staffing and capacity issues. **Local hospitals are asking you to please take this opportunity to remind your patients that non-emergency care can be provided more quickly at urgent care centers and primary care offices, some of which have after-hours appointments and virtual care appointments. Also, emergency rooms are -not- to be used as COVID/FLU testing sites.**

Patients experiencing serious symptoms like a high fever, trouble breathing, or chest pain should still call 9-1-1 or immediately go to the emergency department for care.

## Specialty Spotlight

### IHANY & CNYAIM Network Specialty Practices:



*As Clinically Integrated Networks, continuing to promote in-network referrals will allow for IHANY and CNYAIM to provide better health to the populations we serve. With that in mind, we will have feature spotlights on our CIN partners and affiliates within this newsletter to ensure we keep you informed of our diverse resources.*

March is observed as **National Kidney Month** to raise awareness of the importance of kidney health and to reduce the frequency and impact of kidney disease and associated health problems. Kidney disease is often called a "silent disease" because there are usually no symptoms during the early stages. The majority of people with chronic kidney disease don't know they have it until it is very advanced.

If your patients are over 60 or have risk factors like diabetes, high blood pressure, or heart disease, consider performing urine and blood tests to look for signs of kidney disease. If your patients need a kidney specialist, these are some of the practices you can refer to within our clinically integrated networks.

#### **IHANY Participating Providers:**

**Capital District Renal Physicians**

#### **CNYAIM Participating Providers:**

**Nephrology Associates of Syracuse**

**Nephrology Hypertension Associates of CNY**

If you would like your location featured in a future IHANY-CNYAIM newsletter, please email **Brian Pinga**.

---

## Colorectal Cancer Month

March is also Colorectal Cancer Awareness Month, observed to highlight the importance of screening for colorectal cancer and to promote healthy lifestyle habits that can decrease a person's risk of developing cancer. Colorectal cancer includes cancers of the colon, rectum, or anus.

The importance of health screenings cannot be stressed enough and should be discussed with patients. Early intervention can save lives. St. Peter's Health Partners is featuring colleagues who want to share their experiences to hopefully encourage fellow colleagues to see their doctors regularly and have appropriate screenings done.

Today, we meet **Lance Smith**, privacy officer, Corporate Compliance and Privacy, who talks about why he's thankful he had a colon cancer screening – "Now that I know my family history, I believe it's even more important than ever. "

Click [here](#) to watch his story.



Below are participating colon cancer screening providers within our clinically integrated networks:

**IHANY Participating Providers:**

- [Albany Gastroenterology Consultants](#)
- [Capital District Colon & Rectal Surgery Associates](#)

**CNYAIM Participating Providers:**

- [Ajay Joel Physician, P.C.](#)
- [Associated Gastroenterologists of Central New York](#)
- [Colon Rectal Associates of Central New York](#)
- [Gastroenterology & Hepatology of Central New York](#)
- [Oneida Health](#)
- [Slocum-Dickson Medical Group](#)

**Pharmacy Corner**

### Inflation Reduction Act Updates

As of Jan. 1, 2023, Medicare patients with prescription coverage can get Advisory Committee on Immunization Practices (ACIP)-recommended adult vaccines, including Tdap and Shingles, at no further cost. Also, Medicare patients on insulin who have prescription drug coverage will not pay more than \$35 per month per covered insulin and the Part D deductible will not be applied. Please visit the [CMS Fact Sheet](#) for more information, including a timeline and a frequently asked question document. Continue to watch for updates as the Inflation Reduction Act changes take effect. Please contact [Sara Linnertz](#), Pharm.D., BCACP, with questions.

Reference:

1. The Inflation Reduction Act Lowers Health Care Costs for Millions of Americans, CMS. [www.CMS.gov](https://www.cms.gov). Published Oct. 5, 2022. <https://www.cms.gov/newsroom/fact-sheets/inflation-reduction-act-lowers-health-care-costs-millions-americans>

## Education

### Family Medicine Refresher Course

St. Joseph's Health, together with SUNY Upstate Medical University, is presenting the **50th Annual Family Medicine Refresher Course Conference on March 9-10 at the Sheraton Syracuse University Hotel and Conference Center**. This two-day course is designed to present an intensive review for family physicians who are either preparing for the recertification examination of the American Board of Family Medicine, or desire to keep abreast of some of the changing concepts in practice. Click [here](#) for the program brochure.

### Medical/Medicine Grand Rounds

**These Medical Grand Rounds opportunities are open to all IHANY and CNYAIM providers.** CME credits are available for live events.

#### Offered by St. Peter's Health Partners Colleagues and Affiliated Providers:

Meetings are **virtual via Teams** and are held noon to 1 p.m. on the third Wednesday of each month. Details are available at <https://www.sphp.com/colleagues/continuing-medical-education>. Microsoft Teams meeting links are displayed at the bottom of the page the morning of the event. Recordings will be posted 30 days after the event.



**Wednesday, March 15, noon - 1 p.m.**

***"Surgical Management of Colorectal Liver Metastases"***

Presented by: Dr. Rebecca Keim, St. Peter's Hepatobiliary, Pancreatic, and General Surgery



Email [Kathy Kindness](#), medical librarian, with questions.

**St. Joseph's Health will not be holding Medicine Grand Rounds in March due to the go-live of TogetherCare on March 18.**

---

## ACO Compliance Training Coming Soon

The Centers for Medicare & Medicaid Services (CMS) requires Medicare accountable care organizations (ACOs) to provide compliance training to all ACO providers/participants. To help us meet this obligation, the Trinity Health Office of Integrity & Compliance will create a compliance training video and attestation specific to our Medicare ACO. Once you complete the training, the practice executive will sign the attestation certifying that all participating providers in that practice have completed the training. Additional details and instructions will be sent by email once the training has been released in March.

---

## Center to Advance Palliative Care (CAPC) Educational Opportunity

We are pleased to share this resource with colleagues. Education is available to employed Trinity Health physicians, APPs, RNs, SWs, chaplains, clinical care managers, home health aides, medical assistants, and speech-language pathologists. Continuing education hours are available to the relevant licensed professionals. System Office and regional leaders are also encouraged to participate in the training.

CAPC offers a web-based platform with [palliative education and resources](#). Training modules include Pain Management, Chronic Pain Strategies for Patients with Serious Illness, Communication Skills, Building Physician Skills in Advance Care Planning, Symptom Management, Managing Gaps in Care, Relief of Suffering Across the Disease Trajectory, Best Practices in Dementia Care and Caregiver Support, Preventing Crisis Through Whole Patient Care, and Community-Based Program Design.

Sign up is easy – log in to [CAPC.org](#) with your St. Joseph's Health or St. Peter's Health Partners e-mail address and create an account.

If CIN Independent Affiliate providers are interested in taking the CAPC courses, please contact our Trinity Health CAPC administrator, [Kyle McDaniel](#), for further discussion.

---

# IPRO Educational Opportunities

## Vax Chat

Join Vax Chat **every other Thursday from 7:45 to 8 a.m.** for a brief, but impactful conversation about the latest topics in vaccines. A single registration allows you to join us whenever it works best for you.

**(Click the link above to register.)**

**Mar. 9**

**Mar. 23**

**April 6**

## Health Equity Organizational Assessment (HEOA) Affinity Group

Led by IPRO, Health Equity subject matter experts will work together to advance opportunities for improvement identified from your organization's HEOA report. **We will meet from noon - 12:45 p.m. on the second Thursday of each month.**

**(Click the link above to register.)**

### March 9:

Participants will discuss their plan for piloting their small-scale QI project.

- Who will you involve in your pilot?
- In what timeframe will it be implemented?
- What metrics will you use to help you assess progress?
- What feedback will you collect to help make adjustments?

## Other Timely Regional News

### Clinician Wellness & Resilience

#### Addressing Workplace Burnout

The National Academy of Medicine (NAM) is working to come up with solutions to workplace burnout in health care. [Listen here](#) as Victor J. Dzau, M.D., president of NAM, discusses creation of the plan.

## Engaging Patients - Voice of the Beneficiary

Trinity Health is looking for a [Medicaid or Uninsured beneficiary](#) to join its board. This volunteer position is asked to represent the voice of the beneficiary by bringing the unique perspective of a consumer of services. The volunteer may also be included in relevant clinical committees and/or task forces related to quality, utilization, and patient experience. IHANY meeting requirement would be on a quarterly basis in the evening. Please forward interested candidates to [Brian Pinga](#), administrator CIN/ACO for consideration.

## IHANY-Specific News

# IHANY Board Vacancies

IHANY has the following Board vacancies and is looking for candidates:

- Three at-large seats
- Part-time chief medical officer
- Board member (primary care provider)

Please contact [Brian Pinga](#) for consideration or for more information.

---

## SPHPMA Palliative Care Service Line

Palliative Care Partners is a member of St. Peter's Health Partners Medical Associates (SPHPMA). This medical specialty practice serves inpatients at St. Peter's Hospital, Samaritan Hospital, and Ellis Hospital as well as within the community through Palliative Care Partners at Home.

Palliative Care Partners at Home provides home or telemedicine visits for patients with serious or terminal illness. The practice uses an interdisciplinary approach to care, including physicians, nurses, nurse practitioners, social workers, and chaplains. The team assists patients with pain/symptom management, discussion of care goals, education about disease and disease trajectory, advance care planning, and psychosocial/spiritual support – all in the comfort of home. The nurse care manager provides care coordination across the continuum.

Patients must have a provider referral to receive Palliative Care at Home services. Qualified patients typically have a one- to two-year prognosis with a diagnosis such as cancer, heart failure, lung disease, liver disease, dementia, and end-stage renal disease. Patients residing outside of the zip codes served must have access to video visits.

Palliative Care Partners at Home primarily serves IHANY/ACO patients in certain zip codes within Albany, Rensselaer, Saratoga, and Schenectady counties. The goal is to have a population mix of 80 percent ACO patients and 20 percent non-ACO patients. For the non-ACO population, the goal is to align with hospital re-admission initiatives with efforts focusing on heart failure and COPD.

Additionally, Palliative Care Partners at Home coordinates care with the Eddy Enhanced Care Team for patients who have a palliative diagnosis and a skilled nursing need. Having both services in the home at the same time provides an extra layer of support for patients and families.

For additional information, please reach out to [Kelly Leonard](#), MSN, RN, CHPN, manager, Palliative Care Partners, by email or at 518-525-5064.

### Other Palliative Care Resources in the Community:

**Dr. John Pezzulo**, Saratoga Hospital Medical Group – Outpatient Palliative Care: 518-886-5060 (contact for coverage options)

**Saratoga Senior Center**, enhanced social support for patients in Saratoga County: 518-584-1621 (contact for coverage options)

**\*Landmark - Albany, The Capital Region**, Latham: 518-348-3176

\*Insurances accepted: Highmark Northeastern New York; CDPHP; United Healthcare; Aetna; Wellcare by Fidelis Care

---

# EXPANDED Admission Criteria: IHANY Medicare ACO Remote Patient Monitoring Program (RPM)

We are happy to announce we have expanded the admission criteria for the IHANY Medicare Accountable Care Organization (ACO) Remote Patient Monitoring Program (RPM). IHANY Medicare ACO patients that meet the criteria will have no cost to participate in the program. The expanded criteria is outlined below. Click to read the [full eligibility details](#) along with a [PowerPoint](#) providing more program details.

## What is Remote Patient Monitoring (RPM)?

RPM is a comprehensive monitoring system that enables a patient to take their vitals at home and transmit the information over to the EVNRA Nursing Team in real-time. The electronic information helps us identify any risk factors that may emerge between doctor office visits. A nurse will call to evaluate the patient, reinforce chronic disease management education, and notify the provider if an intervention is needed. Providers do not get called unless a pattern is noted (seven days of abnormal readings) or patient is symptomatic. RPM is Bluetooth enabled with transmissions via satellite. It does not require internet or a landline in the home.

## RPM Admit Criteria (referring clinician to review):

### Expanded Criteria

*Newly diagnosed with COPD or one of the following pulmonary diseases with exacerbation requiring PRN rescue, ED visit, or hospital admit in last six months:*

- COPD
- Chronic bronchitis
- Emphysema

*Newly diagnosed with CHF or one of the following cardiac diseases with exacerbation requiring rescue, ED visit, or hospital admit in last six months:*

- CHF
- Cardiomyopathy
- Uncontrolled high blood pressure
- Heart valvular disease
- Pulmonary hypertension
- Uncontrolled cardiac arrhythmias

### Review of Other Criteria

- Patient or caregiver able to perform vital signs
- Patient is able to stand independently on scale without support
- Patient or caregiver agree to accept phone calls from RPM Team
- Patient or caregiver agree to actively participate in RPM program with knowledge of program discharge once discharge criteria is met. Maximum program participation is four months.
- Patient has physician or mid-level provider willing to sign orders

If you have questions or would like to schedule an education session, please reach out to [Sharon Timpano](#).

---

# New IHANY Care Navigator

We are excited to remind you of our new "Care Navigator." We have compiled a handful of useful resources for both patients in our community and colleagues of St. Peter's Health Partners. It is one-stop shopping for things like finding a provider, where to go for cancer screenings or laboratories, where to find food pantries and other social services and education health resources, career development opportunities, and more. Visit [www.ihany.org/care-navigator](http://www.ihany.org/care-navigator).



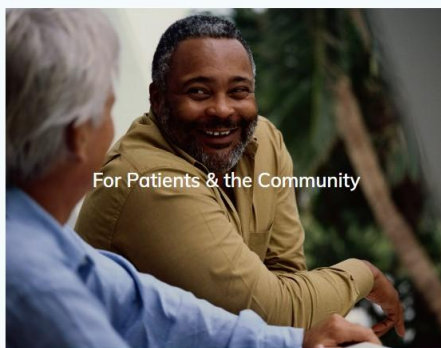
HOME ABOUT **CARE NAVIGATOR** FOR PROVIDERS NEWS UNDERSTANDING MEDICARE

## CARE NAVIGATOR

Welcome to the IHANY Care Navigator page. What is IHANY? It stands for Innovative Health Alliance of New York. Formed in 2015, it is the Capital Region's first network of providers from Ellis Medicine, St. Mary's Healthcare, and St. Peter's Health Partners, and has expanded to include 19 other community health partners. This physician-led endeavor focuses on whole-person care for the patient, focusing on access to care and the quality of that care to ensure a patient receives the physical, behavioral, emotional, and social services they need to ensure quality health outcomes, all while respecting the patient's treatment choices.

**We have created these links to help you navigate through the many health resources available to you through our provider organizations.** Whether you are looking for a health care provider, health programs, or other social needs resources in your community, we have you covered.

Please click on the appropriate box below to see how we can help you attain your best health.



Find Useful Resources Here



Find Useful Resources Here

## Important IHANY Reminders!

*The following content has been shared previously. We are including as a reminder in this month's newsletter.*

### IHANY Lab Services Locations

Do your patients need blood draws related to diabetes screening? Any other lab work?

Click [here](#) to view, download, or print the IHANY Laboratory Services flyer, featuring locations and schedules for all laboratories within the IHANY clinically integrated network.

### IHANY Breast and Colon Cancer Screening Locations

Please take note of this NEW flyer that has been created, expanding IHANY cancer screening locations to include colon cancer screenings. Please share with your patients and colleagues. Click [here](#) to print.

## Laboratory Services at IHANY\* Locations

**MORE CHOICES. MORE CONVENIENCE.**  
All locations are walk-in only.

ALBANY	LATHAM
<b>St. Peter's Laboratory</b> Albany Memorial Campus 600 Northern Blvd., Albany Phone (518) 471-3250   Fax (518) 471-3669	<b>St. Peter's Laboratory</b> 582 New Loudon Rd., Latham Phone (518) 525-8650   Fax (518) 525-8651
RENSSELAER	SARATOGA
<b>St. Peter's Laboratory</b> Operated by St. Peter's Hospital 315 S. Manning Blvd., 1st Fl., Albany, Albany Phone (518) 525-6325   Fax (518) 525-6327	<b>St. Peter's Laboratory</b> Operated by Samaritan Hospital 2 Empire Dr. Suite 205, 2nd Fl., Rensselaer Phone (518) 286-4995   Fax (518) 286-4997
CLIFTON PARK	CLINTON PARK
<b>St. Peter's Laboratory</b> 1365 Washington Ave., Suite 105, Albany Phone (518) 259-4634   Fax (518) 458-9483	<b>St. Peter's Laboratory</b> Operated by Samaritan Hospital 6 Care Lane, Saratoga Springs Phone (518) 269-4600   Fax (518) 621-5670
CLINTON PARK	CLINTON PARK
<b>St. Peter's Laboratory</b> Operated by Samaritan Hospital 1 Yellow Wood Dr., Clifton Park Phone (518) 373-4412   Fax (518) 373-4412	<b>St. Peter's Laboratory</b> Operated by Samaritan Hospital 258 Hookick St., Suite 103, Troy Phone (518) 270-3040   Fax (518) 326-1746
CLINTON PARK	CLINTON PARK
<b>St. Peter's Laboratory</b> Operated by Samaritan Hospital 1 Yellow Wood Dr., Clifton Park Phone (518) 373-4412   Fax (518) 373-4412	<b>St. Peter's Laboratory</b> Operated by Samaritan Hospital 258 Hookick St., Suite 103, Troy Phone (518) 270-3040   Fax (518) 326-1746
CLINTON PARK	CLINTON PARK
<b>St. Peter's Laboratory</b> Operated by Samaritan Hospital 1 Yellow Wood Dr., Clifton Park Phone (518) 373-4412   Fax (518) 373-4412	<b>St. Peter's Laboratory</b> Operated by Samaritan Hospital 258 Hookick St., Suite 103, Troy Phone (518) 270-3040   Fax (518) 326-1746
CLINTON PARK	CLINTON PARK
<b>St. Peter's Laboratory</b> Operated by Samaritan Hospital 1 Yellow Wood Dr., Clifton Park Phone (518) 373-4412   Fax (518) 373-4412	<b>St. Peter's Laboratory</b> Operated by Samaritan Hospital 258 Hookick St., Suite 103, Troy Phone (518) 270-3040   Fax (518) 326-1746
CLINTON PARK	CLINTON PARK
<b>St. Peter's Laboratory</b> Operated by Samaritan Hospital 1 Yellow Wood Dr., Clifton Park Phone (518) 373-4412   Fax (518) 373-4412	<b>St. Peter's Laboratory</b> Operated by Samaritan Hospital 258 Hookick St., Suite 103, Troy Phone (518) 270-3040   Fax (518) 326-1746



\*The Innovative Health Alliance of New York (IHANY) is a collaboration among doctors, health systems, and health care providers in the Capital Region aimed at improving the health of the communities they serve.

## Laboratory Services at IHANY\* Locations

**MORE CHOICES. MORE CONVENIENCE.**  
All locations are walk-in only, except where noted.

ALBANY	LATHAM
<b>St. Peter's Laboratory</b> Albany Memorial Campus 600 Northern Blvd., Albany Phone (518) 471-3250   Fax (518) 471-3669	<b>St. Peter's Laboratory</b> 582 New Loudon Rd., Latham Phone (518) 525-8650   Fax (518) 525-8651
RENSSELAER	SARATOGA
<b>St. Peter's Laboratory</b> Operated by St. Peter's Hospital 315 S. Manning Blvd., 1st Fl., Albany, Albany Phone (518) 525-6325   Fax (518) 525-6327	<b>St. Peter's Laboratory</b> Operated by Samaritan Hospital 2 Empire Dr. Suite 205, 2nd Fl., Rensselaer Phone (518) 286-4995   Fax (518) 286-4997
CLIFTON PARK	CLINTON PARK
<b>St. Peter's Laboratory</b> 1365 Washington Ave., Suite 105, Albany Phone (518) 259-4634   Fax (518) 458-9483	<b>St. Peter's Laboratory</b> Operated by Samaritan Hospital 6 Care Lane, Saratoga Springs Phone (518) 269-4600   Fax (518) 621-5670
CLINTON PARK	CLINTON PARK
<b>St. Peter's Laboratory</b> Operated by Samaritan Hospital 1 Yellow Wood Dr., Clifton Park Phone (518) 373-4412   Fax (518) 373-4412	<b>St. Peter's Laboratory</b> Operated by Samaritan Hospital 258 Hookick St., Suite 103, Troy Phone (518) 270-3040   Fax (518) 326-1746
CLINTON PARK	CLINTON PARK
<b>St. Peter's Laboratory</b> Operated by Samaritan Hospital 1 Yellow Wood Dr., Clifton Park Phone (518) 373-4412   Fax (518) 373-4412	<b>St. Peter's Laboratory</b> Operated by Samaritan Hospital 258 Hookick St., Suite 103, Troy Phone (518) 270-3040   Fax (518) 326-1746
CLINTON PARK	CLINTON PARK
<b>St. Peter's Laboratory</b> Operated by Samaritan Hospital 1 Yellow Wood Dr., Clifton Park Phone (518) 373-4412   Fax (518) 373-4412	<b>St. Peter's Laboratory</b> Operated by Samaritan Hospital 258 Hookick St., Suite 103, Troy Phone (518) 270-3040   Fax (518) 326-1746
CLINTON PARK	CLINTON PARK
<b>St. Peter's Laboratory</b> Operated by Samaritan Hospital 1 Yellow Wood Dr., Clifton Park Phone (518) 373-4412   Fax (518) 373-4412	<b>St. Peter's Laboratory</b> Operated by Samaritan Hospital 258 Hookick St., Suite 103, Troy Phone (518) 270-3040   Fax (518) 326-1746

We recommend all patients check the details of their insurance to understand their coverage and cost responsibility.

## Cancer Screening Locations

ALBANY	LATHAM
<b>St. Peter's Laboratory</b> Albany Memorial Campus 600 Northern Blvd., Albany Phone (518) 471-3250   Fax (518) 471-3669	<b>St. Peter's Laboratory</b> 582 New Loudon Rd., Latham Phone (518) 525-8650   Fax (518) 525-8651
RENSSELAER	SARATOGA
<b>St. Peter's Laboratory</b> Operated by St. Peter's Hospital 315 S. Manning Blvd., 1st Fl., Albany, Albany Phone (518) 525-6325   Fax (518) 525-6327	<b>St. Peter's Laboratory</b> Operated by Samaritan Hospital 2 Empire Dr. Suite 205, 2nd Fl., Rensselaer Phone (518) 286-4995   Fax (518) 286-4997
CLIFTON PARK	CLINTON PARK
<b>St. Peter's Laboratory</b> 1365 Washington Ave., Suite 105, Albany Phone (518) 259-4634   Fax (518) 458-9483	<b>St. Peter's Laboratory</b> Operated by Samaritan Hospital 6 Care Lane, Saratoga Springs Phone (518) 269-4600   Fax (518) 621-5670
CLINTON PARK	CLINTON PARK
<b>St. Peter's Laboratory</b> Operated by Samaritan Hospital 1 Yellow Wood Dr., Clifton Park Phone (518) 373-4412   Fax (518) 373-4412	<b>St. Peter's Laboratory</b> Operated by Samaritan Hospital 258 Hookick St., Suite 103, Troy Phone (518) 270-3040   Fax (518) 326-1746
CLINTON PARK	CLINTON PARK
<b>St. Peter's Laboratory</b> Operated by Samaritan Hospital 1 Yellow Wood Dr., Clifton Park Phone (518) 373-4412   Fax (518) 373-4412	<b>St. Peter's Laboratory</b> Operated by Samaritan Hospital 258 Hookick St., Suite 103, Troy Phone (518) 270-3040   Fax (518) 326-1746
CLINTON PARK	CLINTON PARK
<b>St. Peter's Laboratory</b> Operated by Samaritan Hospital 1 Yellow Wood Dr., Clifton Park Phone (518) 373-4412   Fax (518) 373-4412	<b>St. Peter's Laboratory</b> Operated by Samaritan Hospital 258 Hookick St., Suite 103, Troy Phone (518) 270-3040   Fax (518) 326-1746

# CNYAIM-Specific News

## St. Joseph's Health to Divest Co-Ownership of LACNY

We are pleased to announce we have decided to divest our co-ownership of Laboratory Alliance of Central New York (LACNY) effective on or about Jan. 15, 2024. This will allow us to expand and build state-of-the-art microbiology and anatomic pathology laboratories to better serve our community. We have co-owned LACNY with Crouse Health since 1998. With this move, Crouse becomes sole owner of LACNY which provides more than 10 million tests annually throughout Central New York. Currently, St. Joseph's Physicians labs operate separately from LACNY's rapid response lab inside the hospital. By bringing the labs together under one owned lab structure, we can be more efficient and cost effective with our services.

Click [here](#) to read the full announcement from Meredith Price.

## We Are Here to Support You

## CIN Websites

You can find links to our newsletters and other educational materials and resources on our websites.

[www.ihany.org](http://www.ihany.org)  
[cnyaim.org](http://cnyaim.org)



# Your Teams

## Your IHANY Practice Support Team:

**Adriana Quiroga-Garcia**, Regional Manager, Population Health Quality & Performance

**Ashley Zapp**, Manager, Care Coordination

**Brian M. Pinga**, Administrator CIN/ACO

**Emily Smith**, Risk Adjustment Coding Specialist

**Laura Graham**, Quality Improvement Specialist

**Lisa Kelly-Armstrong**, Director, Network Management & Operations

**Megan Helin**, Post-Acute Care Coordinator

**Michelle Sebastian**, Regional Supervisor, Risk Adjustment Coding & Audit, St. Joseph's Health and St. Peter's Health Partners

## Your CNYAIM Support Team:

**Adriana Quiroga-Garcia**, Regional Manager, Population Health Quality & Performance

**Anne Bosco**, Coordinator ACO/CIN

**Brenda Ko**, Manager Post-Acute Operations

**Danay Romero Rivera**, Patient Navigator CIN/ACO

**Jason Decker**, Administrator ACO/CIN

**Jeanette Loft-Hart**, Program Coordinator CIN/ACO

**Jency L. Wright**, Patient Navigator CIN/ACO

**Michelle Sebastian**, Regional Supervisor, Risk Adjustment Coding & Audit, St. Joseph's Health and St. Peter's Health Partners

**Sara Linnertz**, Population Health Pharmacist

**Sarah Connolly**, Manager, Care Management Network

**Stephanie Restani**, Health Coach Supervisor

[About IHANY](#) | [Contact Us](#)  
[About CNYAIM](#) | [Contact Us](#)

kim.kendrick@sphp.com is signed up to receive emails from Innovative Health Alliance of New York (IHANY)  
[Click here](#) to unsubscribe from similar messages.

© 2023 Innovative Health Alliance of New York (IHANY)  
© 2023 Central New York Accountable Integrated Medicine (CNYAIM)  
All Rights Reserved